

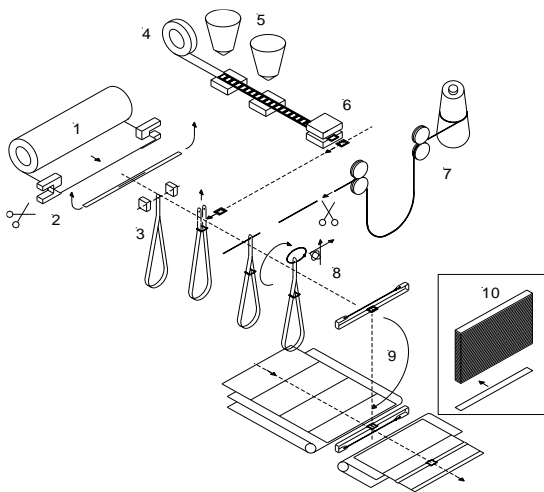
MONA

Fully automatic machine to produce and mount date slides on to Wall Calendars



The MONA produces fully automatic date slides and mounts them onto wall calendars.

OPERATING PROCESS



1. Foil dispenser for supporting band
2. Cutting band
3. Hole punching/chamfering
4. Foil dispenser for date frame
5. 1 or 2 pad-printing stations
6. Punching date frame
7. Dispenser for elastic thread
8. Thread knotting/cutting
9. Mounting of date slide onto calendar
10. Mounting of date slide onto cardboard strip

Products	wall calendars, three- or multiple-months calendars
Formats	width: 200 – 420 mm length: 300 – 1000 mm (with automatic feeding/delivery) from 1000 mm up (Inline or hand feeding/delivery only)
Date frame	standard frame in 3 sizes: S12, S16 and S20 (optional frame on request)
Frame print	pad printing method, one and two colours all available colours of pad printing inks
Material	band and date frame non-rigid: transparent PVC film Thread: elastic thread 160 % stretch
Operating Mode	Inline in production line with or without automatic delivery stand-alone with automatic feeding and delivery
Operator	50 – 200 % manpower (depending on operating mode)
Output	max. 2400 pieces/h
Change-over time	15 – 60 minutes (to change format and printing ink)
Technical data	dimensions 4'430 x 1'560 x 2'000 mm (L x W x H) weight ca. 2'200 kg

INTERESTING FEATURES

- Customized date frames for advertising
- Band, date frame and elastic thread are fix mounted with each other
- Production of date slide on cardboard strip or back wall
- **3 years guarantee**

